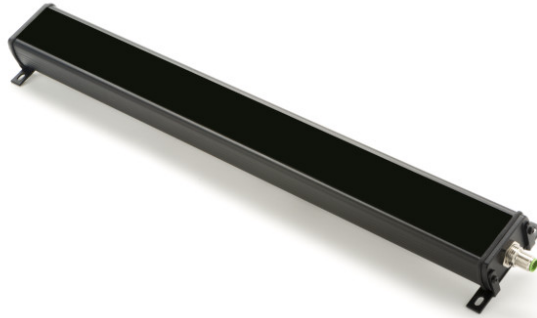


## WPS 440

---



Highly Accurate Sensors Can Also Be Adaptive

### Key Features

---

- **Zero recalibration** – sensor adapts automatically to any material (clear, opaque, metallic, nonwoven, mesh)
- **Large sensing range** – 440 mm (17.3 in) for wide web applications
- **Material-agnostic detection** – fiber-optic technology based on light scattering and spatial filtering
- **Temperature immune** – unlike ultrasonic sensors, performance unaffected by temperature changes
- **One sensor, multiple applications** – edge guiding, width measurement, centerline detection

### Benefits

---

- **Stop losing hours** to sensor recalibration when switching between materials
- **Eliminate changeover delays** – no manual sensor adjustments between product runs
- **End quality escapes** caused by undetected sensor drift between changeovers
- **Remove safety risks** from operators accessing sensors in awkward positions
- **Prevent hidden scrap** from temperature-related inaccuracies that plague ultrasonic sensors

*Note: WPS is a legacy product line. For new installations, consider the **ODC 480** with enhanced features.*

## Specifications

---

<b>Sensor Type</b>	Fiber Optic (diffuse-reflective)	<b>Sensing Range</b>	440 mm (17.3 in)
<b>Image Sensor</b>	1D image sensor	<b>Resolution</b>	0.127 mm (0.005 in)
<b>Repeatability</b>	>99.9%	<b>Working Distance</b>	15-25 mm (0.6-1.0 in)
<b>Response Time</b>	20 ms standard	<b>Operating Temp</b>	-10°C to 65°C (14°F to 150°F)
<b>Protection Class</b>	IP54	<b>Controller Required</b>	Yes (SCU5 only)
<b>Status</b>	Legacy Product – Consider <a href="#">ODC 480</a> for new installations		

## Applications

---

- Edge position sensing on wide web applications
- Web guiding for converting, coating, and laminating lines
- Width measurement for wide materials
- Centerline detection

## Compatibility

---

### SUPPORTED LINE SPEEDS

1000+ fpm

### SUPPORTED MATERIAL TYPES

Clear Film, Clear Film

### SUPPORTED WEB WIDTHS

Wide (48"-72"), Extra Wide (>72")

## Available Configurations

---

Part Number	Configuration
3-400015	WPS 440-IR QD
3-400025	WPS 440-WL QD
3-400115	WPS 440-IR QD AS
7-020001	1" Mounting Bracket for WPS and ODC Sensors

Part Number	Configuration
7-020004	1.5" Mounting Bracket for WPS and ODC Sensors
7-020005	Mounting Bracket for 1" or 25 mm Extrusion for WPS, ODC and 1DC Sensors
7-020006	Mounting Bracket for 1.5" or 40 mm Extrusion for WPS, ODC and 1DC Sensors

## Supporting Documentation

---

### Manuals (5)

- ARIS WPS 440 Product Manual (Generic Version)
- ODC and WPS Installation for Center Guiding and Web Width Measurement
- Sensor Installation Recommendations
- Sensor Installation Recommendations: Inspection Applications
- WPS 112/221/440/900 or ODC 96/192/288/384/480/768/960 Sensor Installation for to Reduce the Effect of Twist

### 2D Drawings (4)

- New Mounting Brackets for WPS, ODC and 1DC sensors - 1.5 in or 40 mm extrusion
- New Mounting Brackets for WPS, ODC and 1DC sensors - 1in or 25 mm extrusion
- WPS 440 xx-QD
- WPS 440-xx QD Pixel Location: 2D Drawing

### 3D Models (5)

- 1.5in Mounting Bracket for WPS and ODC Sensors
- 1in Mounting Bracket for WPS and ODC Sensors
- Mounting Bracket for 1.5in or 40mm Extrusion for WPS, ODC and 1DC Sensors
- Mounting Bracket for 1in or 25mm Extrusion for WPS, ODC and 1DC Sensors
- WPS 440-xx QD

### Wiring Diagrams (4)

- SCU5 C(x)D Wiring with WPS Sensor (Industrial Ethernet)
- SCU5 D Wiring with WPS Sensor (Analog Output)
- SCU5 DD Wiring with WPS Sensor (Digital Output)
- SCU5 DI Wiring with WPS Sensor (Digital Input and Output)



Scan for datasheets, 3D models & full documentation

<https://r2r.tech/products/sensors/wps-440>

### Ready to Get Started?

Contact our experts to discuss how this product fits your application.

**Phone:** +1 (888) 290-3215 | **Email:** [experts@r2r.tech](mailto:experts@r2r.tech) | **Web:** [r2r.tech](https://r2r.tech)