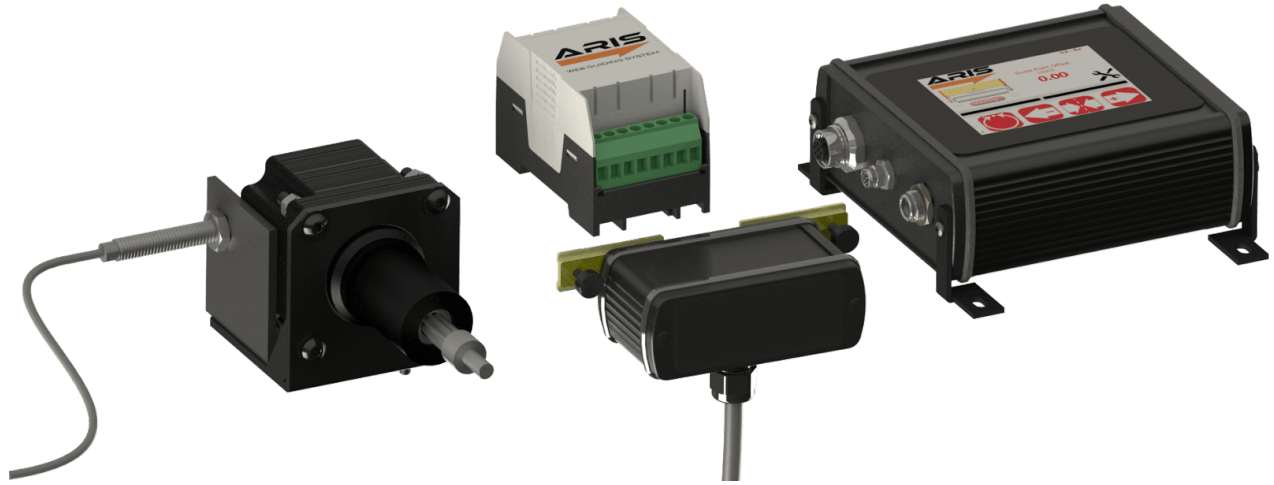


Upgrade Your Old Web Guiding System to the Latest Technology in Web Guiding



Roll-2-Roll Technologies Web Guide Retrofit Kit enables easy upgrade of any old web guiding system with the next generation sensing and control technology. Keep the existing web guide mechanical assembly and replace the sensor, controller and actuator with this retrofit kit solution. Displacement guides, steering guides, unwind stands and rewind stands can be upgraded with this kit by properly sizing the actuator. Old pneumatic, hydraulic or electromechanical web guides get the benefit of the latest sensing and control technologies with this upgrade kit. OEMs also benefit from this upgrade kit when they pair it with web guide mechanical systems. It allows them to provide their customers with the latest in sensor and control technology at an affordable cost.

The advanced patented fiber optic sensor technology makes the web guide retrofit kit easy to install, simple to operate and maintain. The accurate and precise measurement technology adjusts automatically to the physical characteristics of the material, such as opacity and porosity. The benefits include reduction of waste, downtime and changeover time.

BENEFITS

- **Save money** and keep the old web guide assembly while reaping the benefits of new technology
- **Save space** and remove all the old pneumatic, hydraulic and electromechanical systems
- **Save time** with plug-and-play operation and ease of integration
- **Reduce waste** with high accuracy and high precision guiding
- **Reduce downtime** with increased sensor reliability

To order (direct from factory):

By phone: **+1-888-290-3215 ext 01**

By e-mail: **sales@r2r-tech.com**

Online: **<https://r2r.tech/request-quotation>**

Your local contact is:

PACKAGE DETAILS

- WPS sensor for edge, contrast, line or center guiding application
- SCU5 controller with integrated operator interface with different controller options
- Linear hybrid actuator with different thrust options
- Microstepping Driver (256 microsteps/step)
- Servo center sensor

GENERAL SPECIFICATIONS

Input Supply	24 V DC	Current	Less than 5 Amps ¹
Operator Interface	Optional color touchscreen	Languages	Language independent
Motor	Linear hybrid stepper	Maximum Thrust	Upto 1800 N ¹
Controller Frequency	50 Hz	Connectivity	Ethernet/IP, PROFINET
Maximum Speed	Up to 75 mm/sec	Nominal Travel	± 19 mm
Sensor Type	Fiber optic	Sensor Resolution	0.0635 mm or 0.125 mm
Sensor Range	16 mm, 48 mm or 221 mm	Sensor Accuracy	> 99.2%

¹ Off-the-shelf higher thrust actuators (with higher current requirements) are available for high thrust applications

CONTROLLER OPTIONS

ARIS SCU5 MD

Controller + operator interface



ARIS SCU5 MC(x)D

Controller + operator interface + Ethernet



ARIS SCU5 MC(x)

Controller + Ethernet



Roll-2-Roll Technologies LLC
1110 S Innovation Way Dr
Stillwater, OK 74074
Phone: +1-888-290-3215
Support Email: experts@r2r.tech
Sales Email: sales@r2r.tech
Website: <https://r2r.tech>