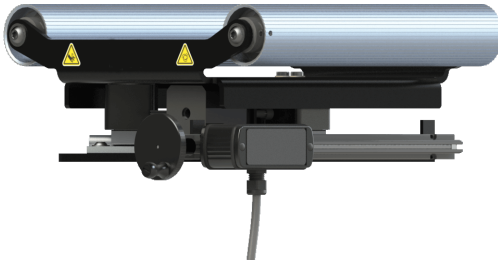


The Most Intelligent Web Guides Should Be Easy to Use



Simplify your setup without sacrificing accuracy

Roll-2-Roll Technologies Low Profile Web Guide is specifically **designed to integrate in tight spaces in narrow web applications**. This simplest plug-and-play web guiding system available in the market is powered by the patented Roll-2-Roll Sensor and the Roll-2-Roll Controller. Once installed the web guiding system requires no subsequent setup or calibration even if the materials and/or processes change.

The advanced patented fiber optic sensor technology makes the web guide easy to install, simple to operate and maintain. The accurate and precise measurement technology adjusts automatically to the physical characteristics of the material, such as opacity and porosity. The benefits include reduction of waste, downtime and changeover time.

GENERAL SPECIFICATIONS

Roller Face (mm)	250, 300, 375, 425, 500	Nominal Travel	± 16 mm
Nominal Temp	0-60° C	Correction Rate	Up to 42 mm/sec
Motor Type	Linear hybrid stepper	Maximum Tension	175 N
Input Supply	24 VDC	Linear Force	150 N
Control Frequency	50 Hz	Error Frequency	2 Hz

BENEFITS

- **Save time** with plug-and-play operation
- **Reduce waste** with high accuracy and high precision guiding
- **Save money** with a single solution for multiple guiding applications
- **Increase productivity** with no setup and calibration for product changeover

To order (direct from factory):

By phone: **+1-888-290-3215 ext 01**

By e-mail: **sales@r2r.tech**

Online: **<https://r2r.tech/request-quotation>**

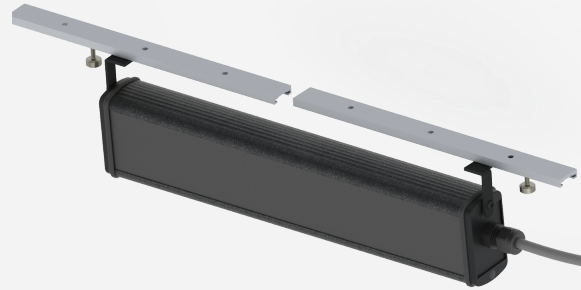
Your local contact is:

SENSOR OPTIONS

WPS 48-IR/WL/UV



WPS 221-IR



CONTROLLER OPTIONS

SCU5 MD

Controller + operator interface



SCU5 MC(x)D

Controller + operator interface + Ethernet



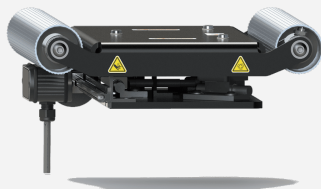
SCU5 MC(x)

Controller + Ethernet



ROLLER MOUNTING PLATE OPTIONS

U-pattern



Z-pattern

