

Highly Accurate Sensors Can Also Be Adaptive



The ODC family of Roll-2-Roll® Sensors is the latest generation of sensors that incorporate advanced CMOS line scan cameras that can be used to measure edge position, contrast position, the position of a line on the web, web width, count and monitor threads. The ODC coupled with an appropriate Roll-2-Roll® Controller can be used for sensing, measurement and monitoring applications. Roll-2-Roll® Sensor with an appropriate Roll-2-Roll® Controller is an affordable vision-like sensing system without the hassles of traditional vision systems.

Salient features of Roll-2-Roll® Sensor system with an appropriate controller include: no setup or calibration, one sided compact sensor housing, high accuracy measurement, one sensor for any material and one sensor for multiple applications. The sensing, measurement and monitoring applications include edge, center, line guiding, width measurement, mark detection, flag detection, thread counting and multiple strip width inspection.

GENERAL SPECIFICATIONS

Sensor Type	Fiber optic
Camera	CMOS Line Camera
Sensor Resolution	0.0635 mm or 0.127 mm
Sensor Range (mm)	48, 96, 192, 288, 384, 480, 768
Light Source	Infrared, Ultraviolet or White light

BENEFITS

- **Increase productivity** with no setup and calibration after product changeover
- **Save time** with plug-and-play operation
- **Reduce waste** with high accuracy and high precision measurement
- **Reduce downtime** with increased sensor reliability with no moving parts
- **Save money** with an inexpensive alternative to vision systems
- **Save money** with a single solution for multiple sensing applications instead of warehousing multiple sensors

To order (direct from factory):

By phone: **+1-888-290-3215 ext 01**

By e-mail: **sales@r2r.tech**

Online: **<https://r2r.tech/request-quotation>**

Your local contact is:

SENSOR OPTIONS

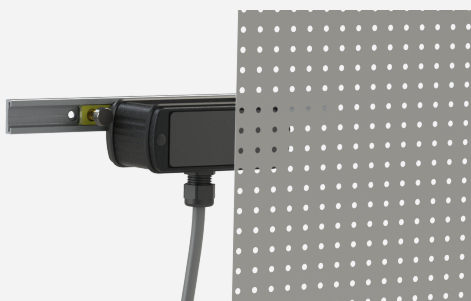
Infrared (850 nm)	ODC 48-IR	ODC 96-IR	ODC 192-IR	ODC 288-IR	ODC 384-IR	ODC 480-IR	ODC 768-IR
White light (Warm)	ODC 48-WL	ODC 96-WL	ODC 192-WL	ODC 288-WL	ODC 384-WL	ODC 480-WL	ODC 768-WL
Ultraviolet (385 nm)	ODC 48-UV	ODC 96-UV	ODC 192-UV	ODC 288-UV	ODC 384-UV	ODC 480-UV	ODC 768-UV

CONTROLLER OPTIONS (Required to use the sensor)

Input	24 VDC	Output (Analog)	0 – 10V, ± 10 V	Output (Analog)	0 – 24, 4 – 20 mA
Interface	Touch Screen	Output (Digital)	EtherNet/IP, PROFINET, EtherCAT		

SENSING APPLICATIONS

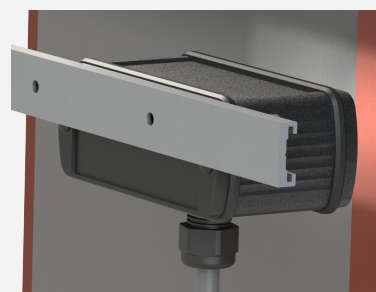
Edge Position Sensing



Contrast/Line Position Sensing



Contrast to Edge Measurement



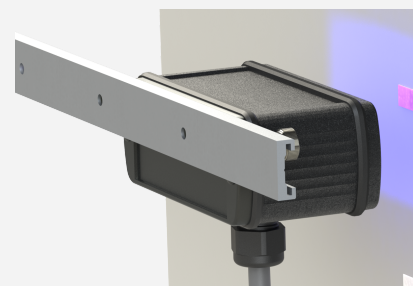
String Counting and Measurement



Width Measurement



Mark Detection (Visible or UV)



Roll-2-Roll Technologies LLC
 1110 S Innovation Way Dr
 Stillwater, OK 74074
 Phone: +1-888-290-3215
 Support Email: experts@r2r.tech
 Sales Email: sales@r2r.tech
 Website: <https://r2r.tech>